

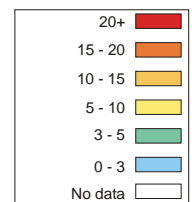
Enrollment

	% Children in different types of schools				% Children not in school		Total
	Government	Private	Madarsa	EGS	Never Enrolled	Drop Out	
Age : 6-14 ALL	72.0	27.7	0.0	0.0	0.1	0.2	100
Age : 6-10 ALL	74.3	25.6	0.0	0.0	0.2	0.0	100
Age : 11-14 ALL	69.2	30.3	0.0	0.0	0.0	0.6	100
Age : 6-10 BOYS	72.3	27.5	0.0	0.0	0.3	0.0	100
Age : 6-10 GIRLS	76.7	23.3	0.0	0.0	0.0	0.0	100
Age : 11-14 BOYS	71.9	27.4	0.0	0.0	0.0	0.8	100
Age : 11-14 GIRLS	66.7	33.0	0.0	0.0	0.0	0.4	100

Out-of-school children

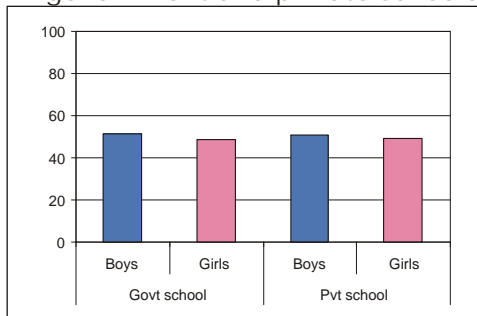


Percentage of children

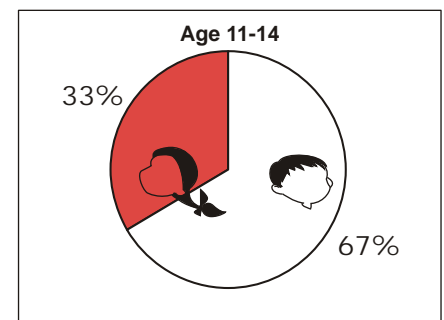


Gender differences

Percentage of boys and girls in government and private schools



Out-of-school children: Proportion of girls and boys.



Learning

	% Children who CANNOT read ...		% Children who CANNOT solve numerical written sums of ...	
	Level 1*	Level 2**	Subtraction or Division	Division
Age : 7-14 ALL	14.9	40.4	26.3	60.3
Age : 7-10 ALL	24.4	58.6	45.4	84.7
Age : 11-14 ALL	4.3	20.3	5.0	33.1
Govt : Std II-V	23.0	56.5	39.3	81.9
Pvt : Std II-V	16.7	52.4	40.5	76.8
Govt : Std VI-VIII	3.2	20.0	4.6	32.6
Pvt : Std VI-VIII	1.1	8.1	4.0	23.8

* Level - 1: Ability to read a small paragraph with short sentences of std 1 level difficulty.

**Level - 2: Ability to read a 'story' text with some long sentences of std 2 level difficulty.

Subtraction:
2 digit subtraction with borrowing.

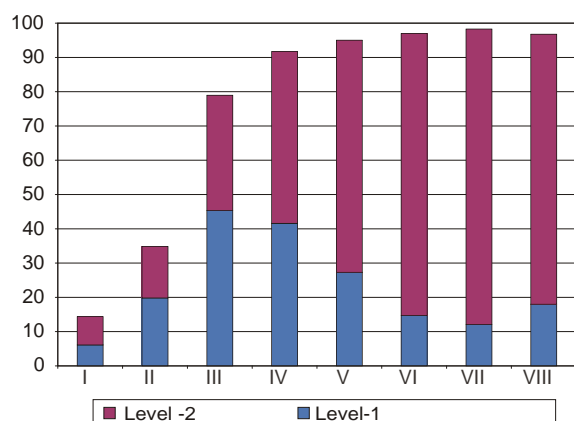
Division:
3 digit divided by 1 digit.

Learning curves

Children who CAN read and solve numerical written sums

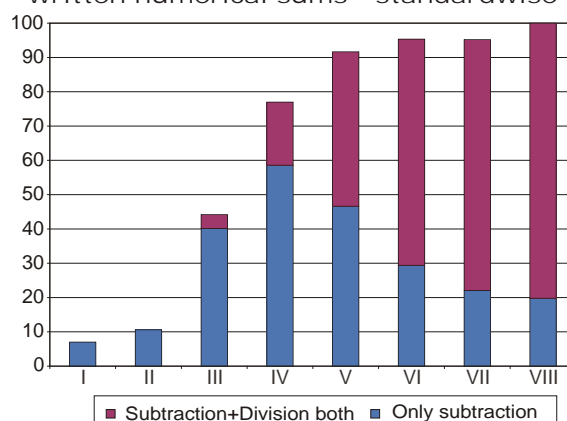
Reading

% All school children who can read-standardwise



Arithmetic

% All school children who can solve written numerical sums - standardwise



Performance of surveyed districts

District	All Children	Std V children	
	% Out-of-school	% CAN read level - 2	% CAN solve division and subtraction
SouthGoa	0.9	63.2	50.0
NorthGoa	0.0	69.5	43.2
Goa State	0.3	67.7	45.0

Comparison of government and private schools based on % Std. V children who CAN read level-2 and solve written numerical sums

